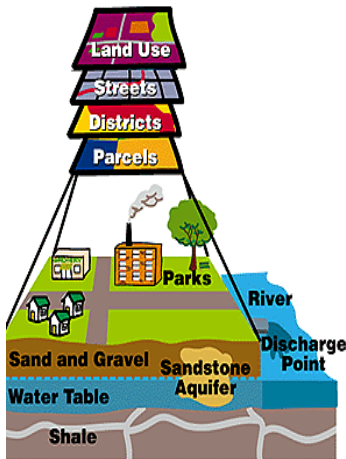


NebraskaMAP

<http://www.NebraskaMAP.gov>

Improving Access to Geospatial Data for Nebraskans

Enhancing the Benefits of Geospatial Data



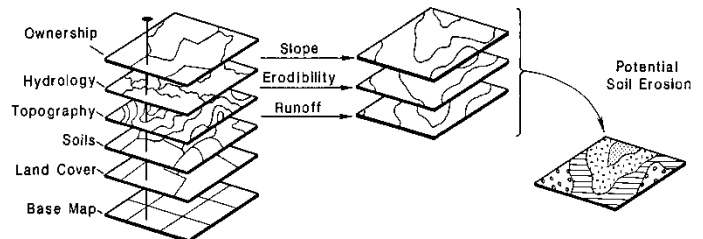
Geospatial data are “digital maps” that represent features such as property parcels, soils, elevation, land use, water resources, roads and railroads, utilities and administrative boundaries

More than 80% of the decisions made in government and the private sector are based on analyses of geospatial data. Such decisions involve property valuation, political redistricting, agriculture, schools, protection of water and soils, wildlife management, emergency response, homeland security, law enforcement, public health and many others. Hundreds of geospatial datasets have been developed for Nebraska; however, there is currently no centralized repository or clearinghouse where one may find, view and access geospatial data for Nebraska. Datasets are scattered among various developers and custodians, and often exhibit differences in format, spatial resolution and other attributes. Moreover, each year data volume increases as new datasets are created and existing datasets are updated. The goal of **NebraskaMAP** is to ensure that Nebraskans make full use of geospatial data and technologies such as geographic information systems (GIS) that are increasingly critical tools for mapping, monitoring and managing our cities and rural lands, and protecting our natural resources. Working in collaboration with the Nebraska GIS Council and many partners, we are establishing a geospatial data-sharing and web services network to support and enhance the ability of Nebraska agencies at all levels of government to better address their respective missions, respond to emergencies and provide for the public good.

A Sample of Nebraska GIS Users

Nebraska Department of Environmental Quality
Nebraska Department of Health and Human Services
Nebraska Department of Natural Resources
Nebraska Department of Roads
Nebraska Emergency Management Agency
Nebraska Game & Parks Commission
Nebraska National Guard
Nebraska Natural Resources Districts
Nebraska State Surveyor's Office
Rainwater Basin Joint Venture
Omaha Public Power District
Lincoln Electric System
Lincoln/Lancaster County
Omaha/Douglas County
Grand Island/Hall County
Scottsbluff/Scotts Bluff County
Sarpy County
U.S. Army Corps of Engineers, Omaha District
U.S. Geological Survey, Nebraska Science Center
U.S. Environmental Protection Agency
U.S. Department of Agriculture Farm Services Agency
U.S. Department of Agriculture Natural Resources Conservation Service
U.S. Fish and Wildlife Service (Nebraska Office)
University of Nebraska (Lincoln, Omaha, Kearney, Medical Center)

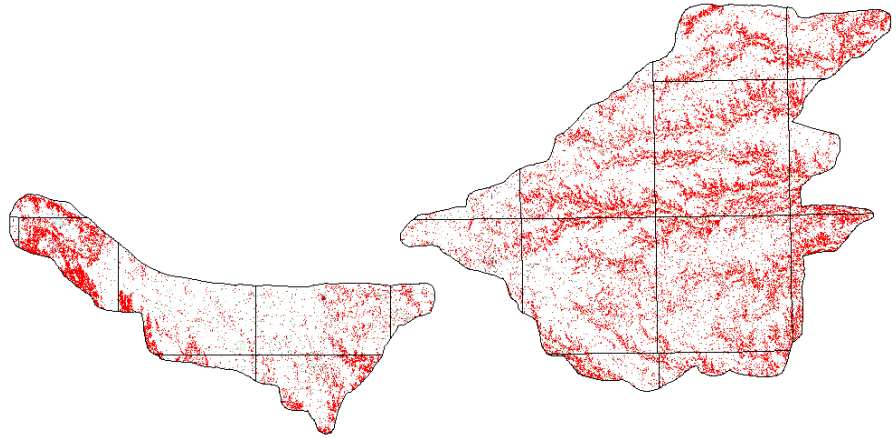
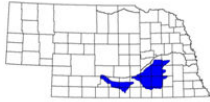
Geographic Information Systems (GIS)



A **Geographic Information System (GIS)** is a decision-support tool comprised of specialized software, integrated with computing and networking hardware, designed to facilitate management, manipulation and analysis of geospatial data. As the use of GIS has expanded across Nebraska, the need for agencies to quickly and reliably identify, access and share geospatial data across institutional and jurisdictional boundaries has become increasingly acute.



Sharing Geospatial Data will Benefit all Nebraskans



A GIS was used to model soil erosion in Nebraska’s Rainwater Basin, an important wetlands ecosystem critical to waterfowl (above). Red areas represent predicted soil loss greater than 5 tons/acre/year. Geospatial data used in this analysis were obtained from six different agencies. Project partners included the University of Nebraska-Lincoln School of Natural Resources, the Nebraska Game & Parks Commission, the Rainwater Basin Joint Venture and the U.S. Fish & Wildlife Service.

NebraskaMAP Status (April 2009)

Development of **NebraskaMAP** commenced in January 2009. A working prototype is expected to be completed by December 2009. The prototype will be expanded and enhanced during 2010.

The NebraskaMAP project is managed by Dan Pfeffer (University of Nebraska-Lincoln) in collaboration with an advisory team comprised of representatives from state, local and federal agencies. Others interested in participating are invited to contact Mr. Pfeffer.

- NebraskaMAP Partners (April 2009)**
- ▶ Nebraska GIS Council
 - ▶ Nebraska Office of the Chief Information Officer
 - ▶ City of Lincoln/Lancaster County
 - ▶ City of Omaha/Douglas County
 - ▶ Nebraska Department of Natural Resources
 - ▶ Nebraska Department of Health and Human Services
 - ▶ Nebraska Department of Roads
 - ▶ Nebraska Emergency Management Agency
 - ▶ Nebraska Game and Parks Commission
 - ▶ Sarpy County
 - ▶ University of Nebraska-Lincoln Libraries
 - ▶ University of Nebraska-Lincoln School of Natural Resources
 - ▶ UNL Center for Advanced Land Management Information Technologies (CALMIT)/NebraskaView
 - ▶ U.S. Geological Survey

Dan Pfeffer
NebraskaMAP Project Manager
CALMIT/School of Natural Resources
University of Nebraska-Lincoln
305 Hardin Hall
Lincoln, NE 68583-0973

Phone: 402/472-7066
Fax: 402/472-2946
E-mail: dpfeffer2@unl.edu
Web site:
<http://www.nitc.state.ne.us/gisc/wrkgrps/DataExch/index.html>