



NATIONAL CONSORTIUM FOR
REMOTE SENSING EDUCATION,
RESEARCH, AND APPLICATIONS



<http://neview.unl.edu/nebraska-view/>

NebraskaView

Principle Investigator, James Merchant, CALMIT, University of Nebraska-Lincoln (e-mail: jmerchant1@unl.edu); Project Manager, Milda Vaitkus, CALMIT, University of Nebraska-Lincoln (e-mail: mildav@calmit.unl.edu); Other Investigators: Al Peters and Donald Rundquist, CALMIT, University of Nebraska-Lincoln.

AmericaView: AmericaView (<http://www.americaview.org>) is a U.S. Geological Survey (USGS)-sponsored effort to establish a network of sites in each state to provide easy, low-cost access to remotely-sensed (e.g., satellite and aerial images) and other geospatial data. The Center for Advanced Land Management Information Technologies (CALMIT, <http://calmit.unl.edu>), University of Nebraska-Lincoln was selected by USGS as the AmericaView site for Nebraska. Through NebraskaView, CALMIT provides access to geospatial data, conducts training and applied research, offers assistance in applications development, and fosters technology transfer.

Our mission is to ensure that Nebraskans (e.g., state and local agencies, K-16 educators) make the fullest use of geospatial data products (such as Landsat images, digital aerial photographs, and digital elevation data) and technologies such as geographic information systems (GIS). In this effort we partner with the Nebraska GIS Steering Committee, the Nebraska Space Grant Consortium, University of Nebraska-Omaha and Creighton University.

Access to Data: CALMIT has developed a site for archiving and disseminating datasets (<http://calmit.unl.edu/calmit/data.htm>) that provides a central clearinghouse for locating data. A new map server (<http://neview.unl.edu/mserv/maps/viewer.htm>) allows users to make and print maps, and links to additional sources of geospatial data (e.g. Nebraska Department of Natural Resources, Conservation and Survey Division) are also provided.

Education: CALMIT educational programs such as short courses and web training are being enhanced and we are working with other units of the University of Nebraska to promote the integration of geospatial technologies into the university curriculum. We provide educational resources and links to free software (<http://calmit.unl.edu/calmit/training.htm>).

Research: CALMIT is working closely with the Nebraska GIS Steering Committee to identify high priority issues that can be addressed with remote sensing tools. We are demonstrating remote sensing applications using products derived from ongoing research and projects with AmericaView partners.

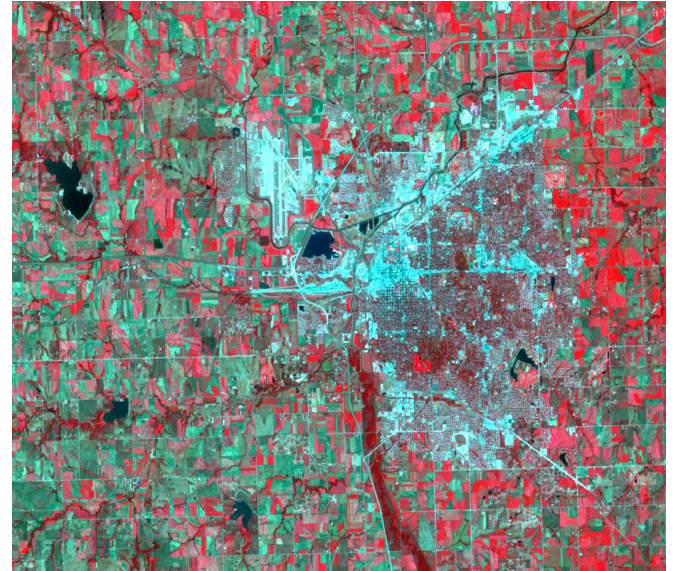


Figure 1. Landsat satellite image of Lincoln, Nebraska.

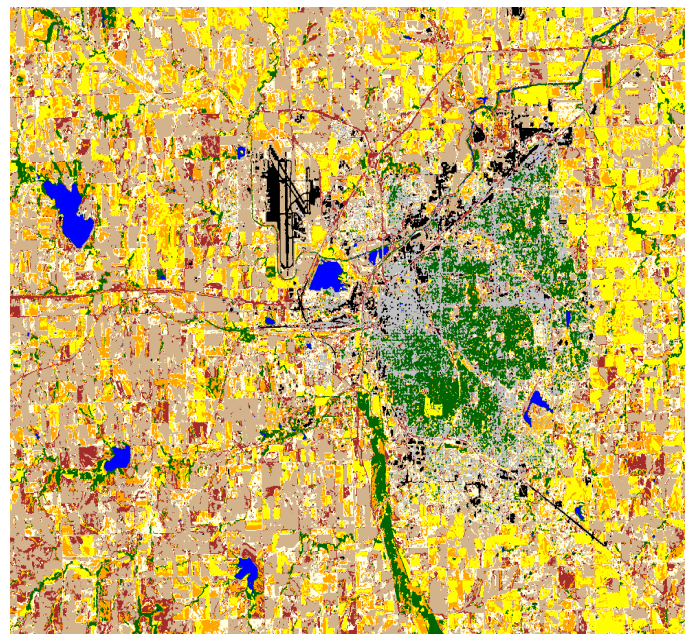


Figure 2. Land cover map from analysis of Landsat image.

Funding for this project has been provided through the **USGS AmericaView Program**. This Fact Sheet series provides educational information on current examples of remote sensing applications from AV Members. No endorsement of or association with *AmericaView*SM by any funding agency other than the USGS should be implied.